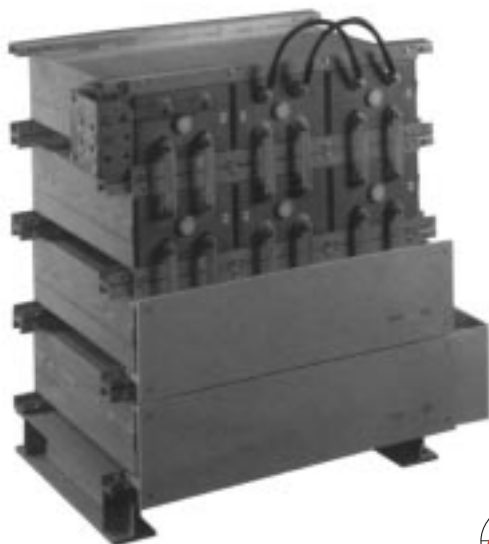


Independence™**VALVE REGULATED TUBULAR MODULAR****B A T T E R I E S**

Power/Full Solutions™

**Description**

The Yuasa, Inc. Independence DGX is the first modular “tubular gel” battery. This tubular battery has a unique “*proven*” plate design that increases the efficiency of the plate material which improves the cycle performance of the battery. The DGX will perform 1200 cycles at 80% DOD to 1.75vpc.

Features

- VRLA High Cycle Battery
- Flexible Configuration
- Modular Design
- Snap-on Safety Shields
- No Watering Requirements
- No Venting Under Normal Operating Conditions
- No Specific Gravity Measurements

Economical Design

- No Racks Required
- Minimal Space Requirements
- Very Low Maintenance
- Easy Installation

Performance

- 1200 Cycles @ 80% DOD to 1.75vpc
- 20 year life expectancy in float service at 77°F ambient temperature.

Benefits

- Superior Cyclability
- Stackable from One to Eight High
- Meets Zone 4 Seismic Application
- Environmentally Friendly
- No special battery room required

M O D E L

EXIDE**DGX**
170-4080 AHR

A P P L I C A T I O N S :

Telecommunications**Switchgear****Solar Applications****High Cycling Applications &
Peak Shaving/Load Leveling****Specifications****POSITIVE PLATE:**

Tubular positive lead calcium/tin alloy plate - active material surrounds plate grid

NEGATIVE PLATE:

Flat lead calcium alloy grid

CELL CONTAINER AND COVER: Made from Flame Retardant polypropylene (UL94-V0/L.O.I. 28%). Standard Bead mesh heat seal

ELECTROLYTE:

Gelled 1.300 S.G. at 77°F

SEPARATOR:

Microporous plastic

CONNECTOR:

Lead plated copper with 316 S.S. hardware

MODULE:

Acid resistant ANSI #61 gray polyester-coated steel with safety shields

SAFETY VENT:

Self-resealing with built-in flame arrestor
1.5 p.s.i. opening pressure (nominal)

FLOAT VOLTAGE SETTING:

Acceptable min/max: 2.23 / 2.27vpc @ 77°F (25°C)
Recommended 2.25vpc

SELF DISCHARGE:

.55% - 1% per week maximum @ 77°F

SLIDE-LOCK™ POST SEAL**POSTS:**

Lead plated copper insert
Single Post - 5-15 plates
Double Post - 17-25 plates
Triple Post - 27-45 plates
Six Post - 51-75 plates
Twelve Post - 81-99 plates

Modules - Dimensions - Weights

MODULE	MODULE VOLTS	NOM. Ah CAP.	DIMENSIONS						WEIGHT MODULE	
			LENGTH (L ²)		HEIGHT (H ¹)		DEPTH (D)		lbs	kgs
			in	mm	in	mm	in	mm		
DGX85-5	12	170	25.9	660	8.6	220	23.0	585	300	136
DGX85-7	12	255	25.9	660	8.6	220	23.0	585	340	155
DGX85-9	12	340	25.9	660	8.6	220	23.0	585	430	195
DGX85-11	12	425	30.6	775	8.6	220	23.0	585	525	239
DGX85-13	12	510	35.1	890	8.6	220	23.0	585	620	282
DGX85-15	12	595	39.6	1005	8.6	220	23.0	585	715	325
DGX85-17	6	680	24.5	625	8.6	220	23.0	585	415	189
DGX85-19	6	765	26.8	680	8.6	220	23.0	585	460	209
DGX85-21	6	850	29.0	740	8.6	220	23.0	585	505	230
DGX85-23	6	935	31.3	795	8.6	220	23.0	585	550	250
DGX85-25	6	1020	33.5	850	8.6	220	23.0	585	600	273
DGX85-27	6	1105	35.8	910	8.6	220	23.0	585	645	293
DGX85-29	6	1190	38.0	965	8.6	220	23.0	585	690	314
DGX85-31	6	1275	40.3	1025	8.6	220	23.0	585	735	334
DGX85-33	6	1360	42.5	1080	8.6	220	23.0	585	780	355
DGX85-39*	4	1530	35.1	890	8.6	220	23.0	585	620	282
DGX85-45*	4	1785	39.6	1005	8.6	220	23.0	585	715	325
DGX85-51*	2	2040	24.5	625	8.6	220	23.0	585	415	189
DGX85-57*	2	2295	26.8	680	8.6	220	23.0	585	460	209
DGX85-63*	2	2550	29.0	740	8.6	220	23.0	585	505	230
DGX85-69*	2	2805	31.3	795	8.6	220	23.0	585	550	250
DGX85-75*	2	3060	33.5	850	8.6	220	23.0	585	600	273
DGX85-81*	2	3315	35.8	910	8.6	220	23.0	585	645	293
DGX85-87*	2	3570	38.0	965	8.6	220	23.0	585	690	314
DGX85-93*	2	3825	40.3	1025	8.6	220	23.0	585	735	334
DGX85-99*	2	4080	42.5	1080	8.6	220	23.0	585	780	355

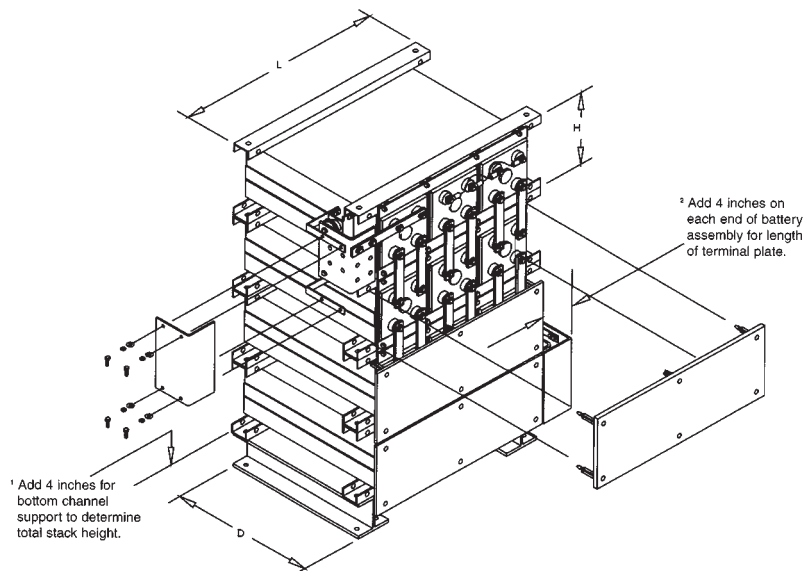
¹ Add 4 inches for bottom channel support to determine total stack height.

² Add 4 inches on each end of battery assembly for length of terminal plate. (shown below)

Nominal capacity is at the 8 hour rate to 1.75 volts per cell at 77°F.

All data subject to change without notice

*Paralleled cells in module



AVERAGE CELL PERFORMANCE DATA* (Discharge Rates in Amperes**)

TYPE	1 MIN*TO 1.50 VPC	1 MIN	15 MIN	1 HR	2 HR	3 HR	4 HR	5 HR	6 HR	8 HR	10 HR	12 HR	24 HR	72 HR	100 HR
TO 1.75 END VOLTS PER CELL															
DGX85-5	282	157	145	100	67	49	39	32	28	21	18	15	8.2	2.8	2.02
DGX85-7	423	236	218	150	100	74	59	48	41	32	26	23	12.2	4.2	3.02
DGX85-9	564	314	290	200	133	99	78	65	55	43	35	30	16.3	5.6	4.03
DGX85-11	705	393	363	250	166	123	98	81	69	54	44	38	20.4	7.0	5.04
DGX85-13	846	471	435	300	200	148	117	97	83	64	53	45	24.5	8.4	6.05
DGX85-15	987	550	508	350	233	172	137	113	96	75	62	53	28.6	9.8	7.06
DGX85-17	1128	628	580	400	266	197	156	129	110	86	70	60	32.6	11.2	8.06
DGX85-19	1269	707	653	450	299	222	176	145	124	96	79	68	36.7	12.6	9.07
DGX85-21	1410	785	725	500	333	246	195	161	138	107	88	75	40.8	14.0	10.08
DGX85-23	1551	864	798	550	366	271	215	177	151	118	97	83	44.9	15.4	11.09
DGX85-25	1692	942	870	600	399	296	234	194	165	128	106	90	49.0	16.8	12.10
DGX85-27	1833	1021	943	650	432	320	254	210	179	139	115	98	53.0	18.2	13.10
DGX85-29	1974	1099	1015	700	466	345	273	226	193	150	123	105	57.1	19.6	14.11
DGX85-31	2115	1178	1088	750	499	369	293	242	207	161	132	113	61.2	21.0	15.12
DGX85-33	2256	1256	1160	800	532	394	312	258	220	171	141	120	65.3	22.4	16.13
DGX85-39	2538	1413	1305	900	599	443	351	290	248	193	159	135	73.4	25.2	18.14
DGX85-45	2961	1649	1523	1050	698	517	410	339	289	225	185	158	85.7	29.4	21.17
DGX85-51	3384	1884	1740	1200	798	591	468	387	330	257	211	180	97.9	33.6	24.19
DGX85-57	3807	2120	1958	1350	898	665	527	436	372	289	238	203	110.2	37.8	27.22
DGX85-63	4230	2355	2175	1500	998	739	585	484	413	321	264	226	122.4	42.0	30.24
DGX85-69	4653	2591	2393	1650	1098	813	644	532	454	353	291	248	134.6	46.2	33.26
DGX85-75	5076	2826	2610	1800	1197	887	702	581	496	385	317	271	146.9	50.4	36.29
DGX85-81	5499	3062	2828	1950	1297	961	761	629	537	417	344	293	159.1	54.6	39.31
DGX85-87	5922	3297	3045	2100	1397	1034	819	678	578	449	370	316	171.4	58.8	42.34
DGX85-93	6345	3533	3263	2250	1497	1108	878	726	620	482	396	338	183.6	63.0	45.36
DGX85-99	6768	3768	3480	2400	1597	1182	936	774	661	514	423	361	195.8	67.2	48.38
TO 1.80 END VOLTS PER CELL															
DGX85-5	128	124	89	61	46	37	31	27	21	17	15	8.1	2.8	1.98	
DGX85-7	192	186	134	91	69	55	46	40	32	26	22	12.1	4.1	2.97	
DGX85-9	256	248	178	121	92	74	62	53	42	35	30	16.2	5.5	3.96	
DGX85-11	320	310	223	152	115	92	77	67	53	44	37	20.2	6.9	4.95	
DGX85-13	384	372	267	182	137	111	93	80	63	52	45	24.2	8.2	5.94	
DGX85-15	448	434	312	212	160	129	108	93	74	61	52	28.3	9.6	6.93	
DGX85-17	512	496	356	243	183	147	124	107	84	70	60	32.3	11.0	7.92	
DGX85-19	576	558	401	273	206	166	139	120	95	79	67	36.4	12.4	8.91	
DGX85-21	640	620	445	303	229	184	155	134	105	87	75	40.4	13.7	9.90	
DGX85-23	704	682	490	334	252	203	170	147	116	96	82	44.4	15.1	10.89	
DGX85-25	768	744	534	364	275	221	186	160	126	105	90	48.5	16.5	11.88	
DGX85-27	832	806	579	394	298	240	201	174	137	114	97	52.5	17.9	12.87	
DGX85-29	896	868	623	425	321	258	217	187	147	122	105	56.6	19.2	13.86	
DGX85-31	960	930	668	455	344	277	232	200	158	131	112	60.6	20.6	14.85	
DGX85-33	1024	992	712	486	366	295	247	214	169	140	120	64.6	22.0	15.84	
DGX85-39	1152	1116	801	546	366	332	278	240	190	157	135	72.7	24.7	17.82	
DGX85-45	1344	1302	935	637	412	387	325	280	221	183	157	84.8	28.8	20.79	
DGX85-51	1536	1488	1068	728	481	442	371	320	253	210	179	97.0	33.0	23.76	
DGX85-57	1728	1674	1202	819	550	498	418	361	284	236	202	109.1	37.1	26.73	
DGX85-63	1920	1860	1335	910	618	553	464	401	316	262	224	121.2	41.2	29.70	
DGX85-69	2112	2046	1469	1001	687	608	510	441	348	288	247	133.3	45.3	32.67	
DGX85-75	2304	2232	1602	1092	756	664	557	481	379	314	269	145.4	49.4	35.64	
DGX85-81	2496	2418	1736	1183	825	719	603	521	411	341	292	157.6	53.6	38.61	
DGX85-87	2688	2604	1869	1274	893	774	650	561	442	367	314	169.7	57.7	41.58	
DGX85-93	2880	2790	2003	1365	1031	830	696	601	474	393	336	181.8	61.8	44.55	
DGX85-99	3072	2976	2136	1457	1099	885	742	641	506	419	359	193.9	65.9	47.52	
TO 1.81 END VOLTS PER CELL															
DGX85-5	122	120	87	60	45	36	31	27	21	17	15	8.1	2.7	1.97	
DGX85-7	183	180	131	89	68	55	46	40	32	26	22	12.1	4.1	2.96	
DGX85-9	244	240	174	119	90	73	61	53	42	35	30	16.1	5.5	3.94	
DGX85-11	305	300	218	149	113	91	77	66	53	44	37	20.2	6.9	4.93	
DGX85-13	366	360	261	179	135	109	92	80	63	52	45	24.2	8.2	5.92	
DGX85-15	427	420	305	208	158	127	107	93	74	61	52	28.2	9.6	6.90	
DGX85-17	488	480	348	238	180	146	123	106	84	70	60	32.2	11.0	7.89	
DGX85-19	549	540	392	268	203	164	138	119	95	78	67	36.3	12.3	8.87	
DGX85-21	610	600	435	298	225	182	153	133	105	87	75	40.3	13.7	9.86	
DGX85-23	671	660	479	327	248	200	169	146	116	96	82	44.3	15.1	10.85	
DGX85-25	732	720	522	357	270	218	184	159	126	105	90	48.4	16.4	11.83	
DGX85-27	793	780	566	387	293	237	199	172	137	113	97	52.4	17.8	12.82	
DGX85-29	854	840	609	417	316	255	214	186	147	122	105	56.4	19.2	13.80	
DGX85-31	915	900	653	446	338	273	230	199	158	131	112	60.5	20.6	14.79	
DGX85-33	976	960	696	476	361	291	245	212	168	140	119	64.5	21.9	15.78	
DGX85-39	1098	1080	783	536	406	328	276	239	189	157	134	72.5	24.7	17.75	
DGX85-45	1281	1260	914	625	473	382	322	279	221	183	157	84.6	28.8	20.71	
DGX85-51	1464	1440	1044	714	541	437	368	318	252	209	179	96.7	32.9	23.66	
DGX85-57	1647	1620	1175	804	609	491	414	358	284	235	202	108.8	37.0	26.62	
DGX85-63	1830	1800	1305	893	676	546	460	398	315	262	224	120.9	41.1	29.58	
DGX85-69	2013	1980	1436	982	744	601	506	438	347	288	246	133.0	45.2	32.54	
DGX85-75	2196	2160	1566	1072	811	655	552	477	378	314	269	145.1	49.3	35.50	
DGX85-81	2379	2340	1697	1161	879	710	598	517	410	340	291	157.2	53.4	38.45	
DGX85-87	2562	2520	1827	1250	947	764	643	557	441	366	314	169.3	57.5	41.41	
DGX85-93	2745	2700	1958	1339	1014	819	689	597	473	392	336	181.4	61.7	44.37	
DGX85-99	2928	2880	2088	1429	1082	874	735	637	504	419	358	193.4	65.8	47.33	

*Values listed represent 100% of the cell's capacity. Initial capacity shall be a minimum of 90% of these values per IEEE 1188.

**Values include intercell connector drop. All data subject to change without notice.

†One minute rates to 1.50 VPC should only be used for short circuit calculations and not as performance data.

AVERAGE CELL PERFORMANCE DATA* (Discharge Rates in Amperes**)

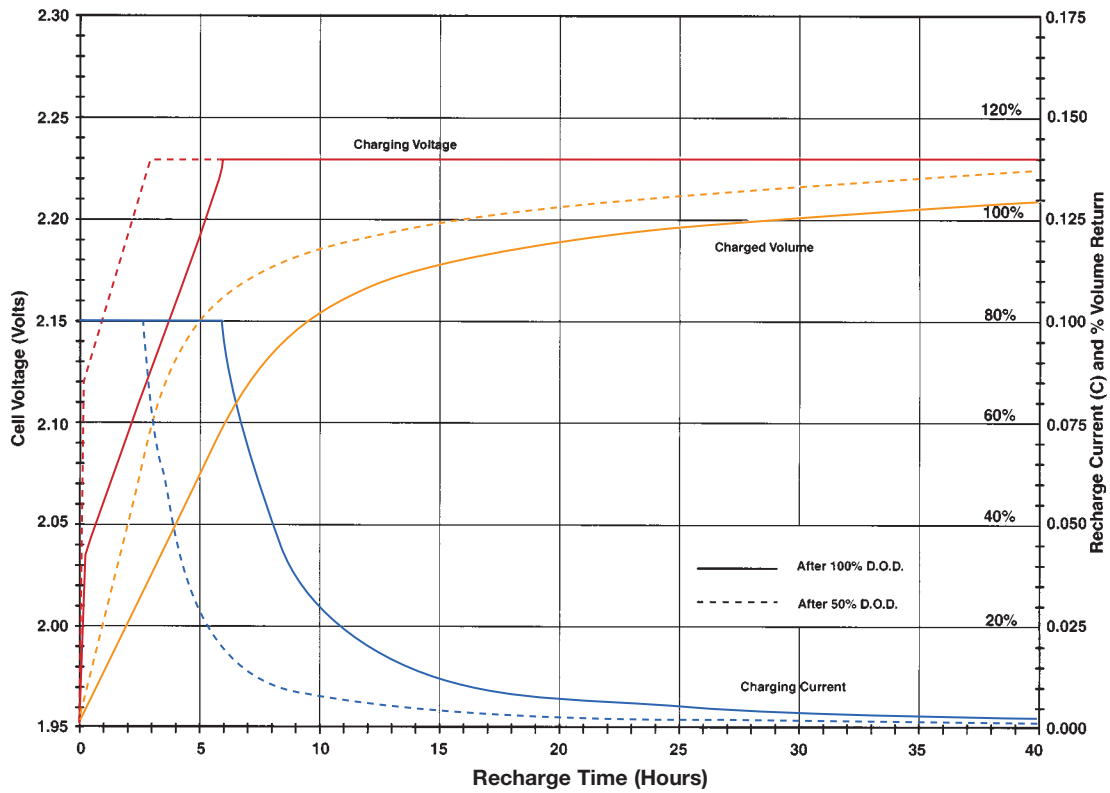
TYPE	1 MIN	15 MIN	1 HR	2 HR	3 HR	4 HR	5 HR	6 HR	8 HR	10 HR	12 HR	24 HR	72 HR	100 HR
TO 1.84 END VOLTS PER CELL														
DGX85-5	106	104	80	55	42	34	29	25	20	17	14	7.7	2.7	1.94
DGX85-7	159	156	120	83	63	51	43	38	30	25	21	11.6	4.1	2.92
DGX85-9	212	208	160	110	84	68	58	50	40	33	29	15.4	5.4	3.89
DGX85-11	265	260	200	138	105	85	72	63	50	42	36	19.3	6.8	4.86
DGX85-13	318	312	240	166	126	102	86	75	60	50	43	23.1	8.1	5.83
DGX85-15	371	364	280	193	147	119	101	88	70	58	50	27.0	9.5	6.80
DGX85-17	424	416	320	221	168	136	115	100	80	67	57	30.8	10.8	7.78
DGX85-19	477	468	360	249	189	153	130	113	90	75	64	34.7	12.2	8.75
DGX85-21	530	520	400	276	210	170	144	125	100	83	71	38.5	13.5	9.72
DGX85-23	583	572	440	304	231	187	158	138	110	92	79	42.4	14.9	10.69
DGX85-25	636	624	480	331	252	204	173	150	120	100	86	46.2	16.2	11.66
DGX85-27	689	676	520	359	272	221	187	163	130	108	93	50.1	17.6	12.64
DGX85-29	742	728	560	387	293	238	202	175	140	117	100	53.9	18.9	13.61
DGX85-31	795	780	600	414	314	255	216	188	150	125	107	57.8	20.3	14.58
DGX85-33	848	832	640	442	335	272	230	201	160	133	114	61.6	21.6	15.55
DGX85-39	954	936	720	497	377	306	259	226	180	150	129	69.3	24.3	17.50
DGX85-45	1113	1092	840	580	440	357	302	263	210	175	150	80.9	28.4	20.41
DGX85-51	1272	1248	960	663	503	408	346	301	240	200	171	92.4	32.4	23.33
DGX85-57	1431	1404	1080	746	566	459	389	338	270	225	193	104.0	36.5	26.24
DGX85-63	1590	1560	1200	829	629	510	432	376	300	250	214	115.5	40.5	29.16
DGX85-69	1749	1716	1320	911	692	561	475	414	330	275	236	127.1	44.6	32.08
DGX85-75	1908	1872	1440	944	755	612	518	451	360	300	257	138.6	48.6	34.99
DGX85-81	2067	2028	1560	1077	817	663	561	489	390	325	279	150.2	52.7	37.91
DGX85-87	2226	2184	1680	1160	880	714	605	526	420	350	300	161.7	56.7	40.82
DGX85-93	2385	2340	1800	1243	943	765	648	564	450	375	321	173.3	60.8	43.74
DGX85-99	2544	2496	1920	1326	1006	816	691	602	480	400	343	184.8	64.8	46.66
TO 1.88 END VOLTS PER CELL														
DGX85-5	87	86	70	50	39	32	27	23	18	15	13	7.2	2.5	1.83
DGX85-7	131	129	105	76	58	47	40	35	27	23	20	10.8	3.8	2.74
DGX85-9	174	172	140	101	78	63	53	46	37	30	26	14.4	5.1	3.66
DGX85-11	218	215	175	126	97	79	67	58	46	38	33	18.0	6.4	4.57
DGX85-13	261	258	210	151	117	95	80	69	55	46	39	21.6	7.6	5.48
DGX85-15	305	301	245	176	136	111	93	81	64	53	46	25.2	8.9	6.40
DGX85-17	348	344	280	202	155	126	107	92	73	61	52	28.8	10.2	7.31
DGX85-19	392	387	315	227	175	142	120	104	82	69	59	32.4	11.4	8.23
DGX85-21	435	430	350	252	194	158	133	115	92	76	65	36.0	12.7	9.14
DGX85-23	479	473	385	277	214	174	147	127	101	84	72	39.6	14.0	10.05
DGX85-25	522	516	420	302	233	190	160	139	110	91	79	43.2	15.2	10.97
DGX85-27	566	559	455	327	253	205	173	150	119	99	85	46.8	16.5	11.88
DGX85-29	609	602	490	353	272	221	187	162	128	107	92	50.4	17.8	12.80
DGX85-31	653	645	525	378	291	237	200	173	137	114	98	54.0	19.1	13.71
DGX85-33	696	688	560	403	311	253	213	185	146	122	105	57.6	20.3	14.62
DGX85-39	783	774	630	453	350	284	240	208	165	137	118	64.8	22.9	16.45
DGX85-45	914	903	735	529	408	332	280	242	192	160	137	75.6	26.7	19.19
DGX85-51	1044	1032	840	605	466	379	320	277	220	183	157	86.4	30.5	21.94
DGX85-57	1175	1161	945	680	525	427	360	312	247	206	177	97.2	34.3	24.68
DGX85-63	1305	1290	1050	756	583	474	400	346	275	228	196	108.0	38.1	27.42
DGX85-69	1436	1419	1155	831	641	521	440	381	302	251	216	118.8	41.9	30.16
DGX85-75	1566	1548	1260	907	699	569	480	416	329	274	236	129.6	45.7	32.90
DGX85-81	1697	1677	1365	982	758	616	520	450	357	297	255	140.4	49.5	35.65
DGX85-87	1827	1806	1470	1058	816	664	560	485	384	320	275	151.2	53.3	38.39
DGX85-93	1958	1935	1575	1134	874	711	600	520	412	343	294	162.0	57.2	41.13
DGX85-99	2088	2064	1680	1209	932	758	640	554	439	366	314	172.8	61.0	43.87
TO 1.90 END VOLTS PER CELL														
DGX85-5	76	75	62	46	36	30	25	22	18	15	13	7.0	2.5	1.80
DGX85-7	114	113	93	69	55	45	38	33	26	22	19	10.5	3.8	2.70
DGX85-9	152	150	124	93	73	60	51	44	35	29	25	14.0	5.0	3.60
DGX85-11	190	188	155	116	91	75	64	55	44	36	31	17.5	6.3	4.50
DGX85-13	228	225	186	139	109	90	76	66	53	44	38	21.0	7.5	5.40
DGX85-15	266	263	217	162	128	105	89	77	61	51	44	24.5	8.8	6.30
DGX85-17	304	300	248	185	146	120	102	88	70	58	50	28.0	10.0	7.20
DGX85-19	342	338	279	208	164	135	114	99	79	66	57	31.5	11.3	8.10
DGX85-21	380	375	310	232	182	150	127	110	88	73	63	35.0	12.5	9.00
DGX85-23	418	413	341	255	201	165	140	121	96	80	69	38.5	13.8	9.90
DGX85-25	456	450	372	278	219	180	153	132	105	88	75	42.0	15.0	10.80
DGX85-27	494	488	403	301	237	195	165	143	114	95	82	45.5	16.3	11.70
DGX85-29	532	525	434	324	255	210	178	154	123	102	88	49.0	17.5	12.60
DGX85-31	570	563	465	347	274	225	191	165	131	109	94	52.5	18.8	13.50
DGX85-33	608	600	496	370	292	240	203	176	140	117	101	56.0	20.0	14.40
DGX85-39	684	675	558	417	328	270	229	198	158	131	113	63.0	22.5	16.20
DGX85-45	798	788	651	486	383	315	267	232	184	153	132	73.5	26.3	18.90
DGX85-51	912	900	744	556	438	360	305	265	210	175	151	84.0	30.0	21.60
DGX85-57	1026	1013	837	625	493	405	343	298	236	197	170	94.5	33.8	24.30
DGX85-63	1140	1125	930	695	547	450	381	331	263	219	189	105.0	37.5	27.00
DGX85-69	1254	1238	1023	764	602	495	419	364	289	241	207	115.5	41.3	29.70
DGX85-75	1368	1350	1116	834	657	540	458	397	315	263	226	126.0	45.0	32.40
DGX85-81	1482	1463	1209	903	712	585	496	430	341	285	245	136.5	48.8	35.10
DGX85-87	1596	1575	1302	972	766	630	534	463	368	307	264	147.0	52.5	37.80
DGX85-93	1710	1688	1395	1042	821	675	572	496	394	328	283	157.5	56.3	40.50
DGX85-99	1824	1800	1488	1111	876	720	610	529	420	350	302	168.0	60.0	43.20

*Values listed represent 100% of the cell's capacity. Initial capacity shall be a minimum of 90% of these values per IEEE 1188.

**Values include intercell connector drop. All data subject to change without notice.

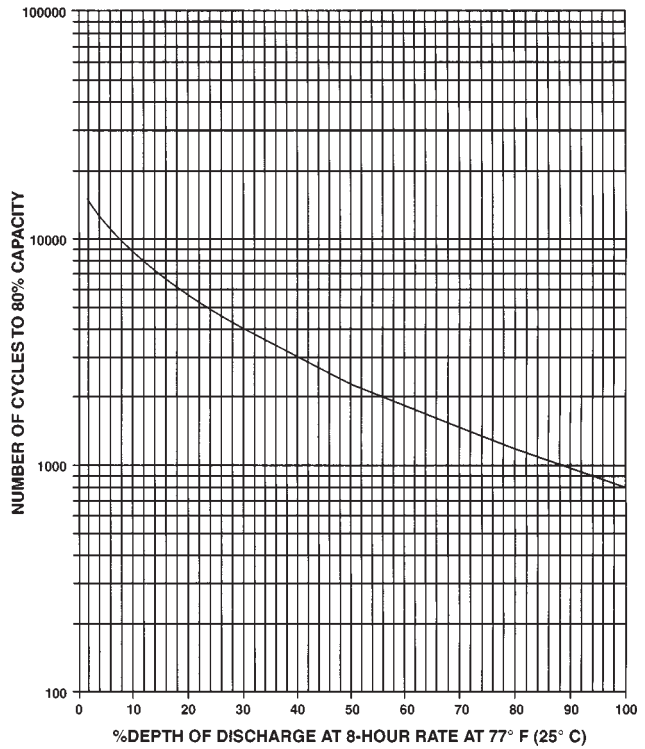
DGX85 Typical Recharge Characteristics - 77°F (25°C)

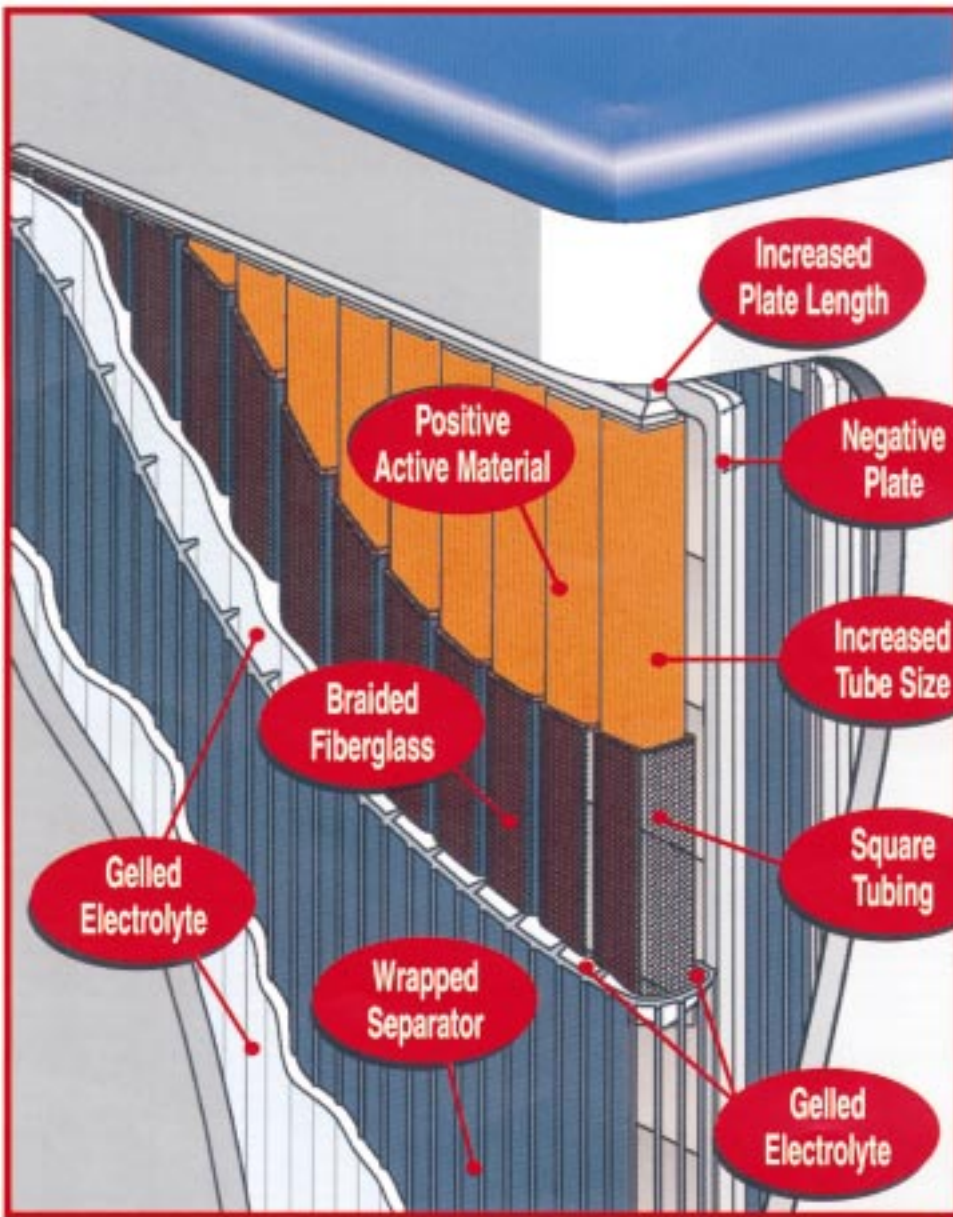
2.23 VPC Constant Voltage with 0.10C Current Limit



CELL TYPE	Internal Resistance	Short Circuit Current
	(Milliohms)	(Amps)
DGX85-5	2.000	1030
DGX85-7	1.333	1545
DGX85-9	1.000	2060
DGX85-11	0.800	2575
DGX85-13	0.667	3090
DGX85-15	0.571	3605
DGX85-17	0.500	4120
DGX85-19	0.444	4635
DGX85-21	0.400	5150
DGX85-23	0.364	5665
DGX85-25	0.333	6180
DGX85-27	0.308	6695
DGX85-29	0.286	7210
DGX85-31	0.267	7725
DGX85-33	0.250	8240
DGX85-39	0.222	9270
DGX85-45	0.190	10815
DGX85-51	0.167	12360
DGX85-57	0.148	13905
DGX85-63	0.133	15450
DGX85-69	0.121	16995
DGX85-75	0.111	18540
DGX85-81	0.103	20085
DGX85-87	0.095	21630
DGX85-93	0.089	23175
DGX85-99	0.083	24720

PROJECTED DGX85 CYCLE PERFORMANCE





Slide Lock™ Post Seal



All Data Subject to Change without Notice



Power/Full Solutions™

Corporate Office: P.O. Box 14145, Reading, PA 19612-4145
610-208-1991 • 800-538-3627
FAX 610-372-8613

Sales Offices
Eastern Region: 215-491-3700 • 800-346-4402
FAX 215-491-2304
Western Region: 510-887-2046 • 888-887-2046
FAX 510-887-6309

International: 610-208-1847
FAX 610-208-1851
Yuasa Canada: 905-790-1212
FAX 905-790-7070

Yuasa Argentina: 54-1-736-3000
FAX 54-1-736-3200
Yuasa de Mexico: 52-83-656-620
FAX 52-83-656-621

Acumuladores Navit S.A., Brazil: 55-11-6412-7522
FAX 55-11-6481-4019
Visit us on the web at: www.yuasastationary.com

Please check our website for literature updates

Represented by:



When ordering new batteries, also remember to properly recycle your old lead batteries. Federal and state regulations require lead-acid batteries be recycled. Yuasa's nationwide service organization can arrange pickup, transportation to and recycling at any one of our company affiliated smelters. Call 1-800-972-7372 for more information.

Printed 5/00 - 3,000
Rev. - 5/00



Printed in USA