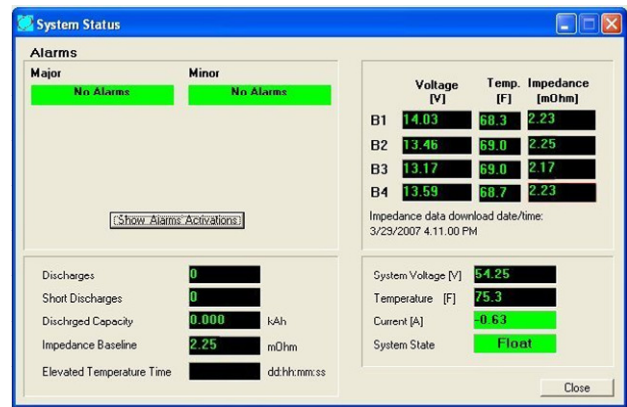
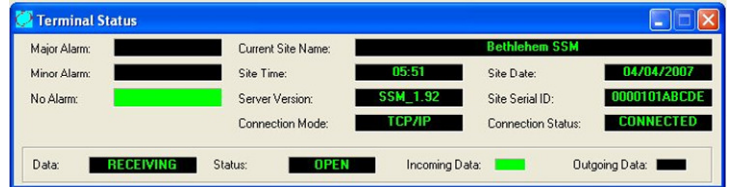




LifeLink[®] Single String Monitor

World Class Remote Battery Management Systems



Standard Features

- ✓ String Level Monitoring
 - String Voltage & Current
 - Ambient Temperature
 - Discharge Event Management
- ✓ Alarm/Event Management
 - User Definable Thresholds
 - Alarm Priorities
 - Dry Contact Outputs

Applications

- ✓ Telecom Applications
- ✓ Cellular Towers
- ✓ Rectifiers
- ✓ LED Traffic UPS
- ✓ Remote RTU

Optional Features

- ✓ Battery Voltage
- ✓ Battery Temperature
- ✓ Impedance Monitoring
- ✓ TCP/IP Interface
- ✓ 56K Modem

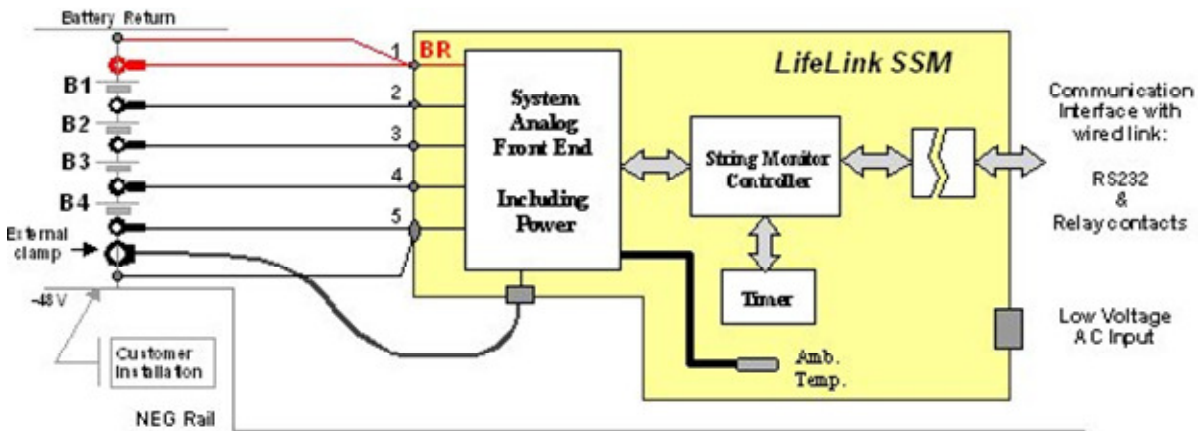
Benefits

- ✓ Reports Dangerous Overcharge Situations
- ✓ Cost Effective for Large Deployments
- ✓ Reduces Costly Service Calls
- ✓ Remotely Accessible
- ✓ Verifies Operating Environment
- ✓ Modular Design Reduces Cost

Configurations

Product Assembly	Ambient Temperature	System Voltage	System Current	Dry Contact Outputs	Battery Voltage	Battery Temperature	Impedance
SSM-B	✓	✓	✓	✓			
SSM-BV	✓	✓	✓	✓	✓		
SSM-BVT	✓	✓	✓	✓	✓	✓	
SSM-BVTI	✓	✓	✓	✓	✓	✓	✓

Block Diagram



Specifications

SYSTEM LEVEL MEASUREMENTS

DC System Voltage:

Range: 20 VDC – 60 VDC (customer source)
 Accuracy (System): +/- 0.05%
 Full range: +/-0.1%

Ambient Temperature:

Range (ambient): -40°C to +75°C (-40°F to +167°F)
 Accuracy: +/-0.5 Degree C
 (@ ambient temperature sensor location)

Charge/Discharge:

Current Range: +/- 100 Amps (Other ranges available)
 Accuracy: +/-0.5%, plus clamp accuracy

ELECTRICAL PARAMETERS

LifeLink DC Power Consumption:

23 mA @ 48 VDC

ENVIRONMENTAL SPECIFICATIONS

Operating Temperature:

-40°C to +75°C (-40°F to +167°F)

Storage Temperature:

-50°C to +85°C (-58°F to +185°F)

Humidity:

Relative Humidity 5% - 90% (no condensation)

SYSTEM FEATURES

System & Battery Performance Sampling:

- System Overcharge, Undercharge, Discharge
- System Current
- High & Low Ambient Temperature Thresholds
- Battery Overcharge, Undercharge, Discharge
- Battery Temperature
- Battery Impedance

Discharge Detection:

Via system negative current

Discharge Categories:

Short Discharges - Customer Defined Duration
 (in 1.0 minute increments)
 Long Discharges - Duration Exceeding Short Discharge

Discharge Record:

Separate logs, long and short discharges
 Cumulative Capacity Removed (kAh)
 Discharge Event Log consisting of:
 - Discharge Number
 - Discharge Date/Time Stamp
 - Maximum Discharge Current
 - Discharge Duration

Total Discharge Energy:

Cumulative Capacity Removed (kAh)

Local Alarm Indicators:

- Major Alarm
- Minor Alarm
- Communication Alarm

Alarm Priorities:

Major; Minor (Customer Defined)

Dry Contact Outputs:

Major; Minor Form-C Relays



www.enersafe.com



www.myerspower.com

Florida Office: 3118 Gulf To Bay Blvd., Suite 102, Clearwater, FL 33759 Tel: (727) 793-9710 Fax: (727) 793-9711
 Eastern Office: 2000 Highland Ave., Bethlehem, PA 18020 Tel: (610) 868-3500 Fax: (610) 868-8686

Specifications subject to change without notice